

Cascade-Siskiyou National Monument

NATIONAL LANDSCAPE CONSERVATION SYSTEM

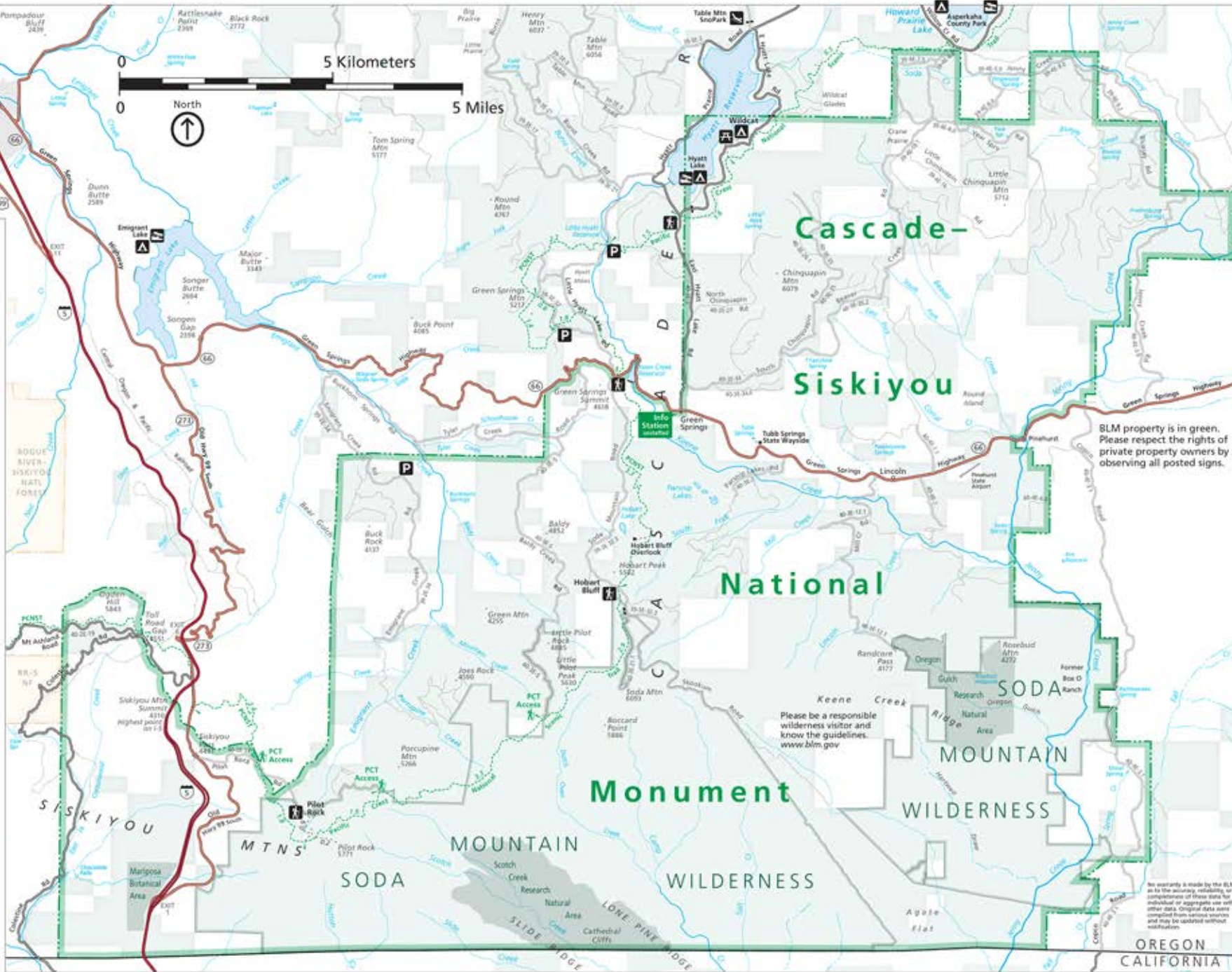
Monument boundary
Wilderness boundary

BLM property
Forest Service

Winter road conditions:
Many roads are not maintained. Please inquire locally.

- Interstate
- Major Thru Paved Road
- Paved Road
- Unpaved Road
Generally Suitable for Passenger Cars
- Local Road
Inquire locally about conditions: 4WD or High-Clearance vehicles recommended
- Hiking Trail
- National Trail with mileages

- Visitor Info Station**
- Trail Access
 - Trailhead
 - Campground
 - Parking Area
 - Picnic Tables



BLM property is in green.
Please respect the rights of private property owners by observing all posted signs.

Please be a responsible wilderness visitor and know the guidelines.
www.blm.gov

No warranty is made by the BLM as to the accuracy, reliability, or completeness of these data for individual or aggregate use with other data. Original data were compiled from various sources and may be updated without notification.

OREGON
CALIFORNIA